

RICH COUNTY

SPINNAKER POINT SUBDIVISION/CONDOMINIUM AMENDED PLAT

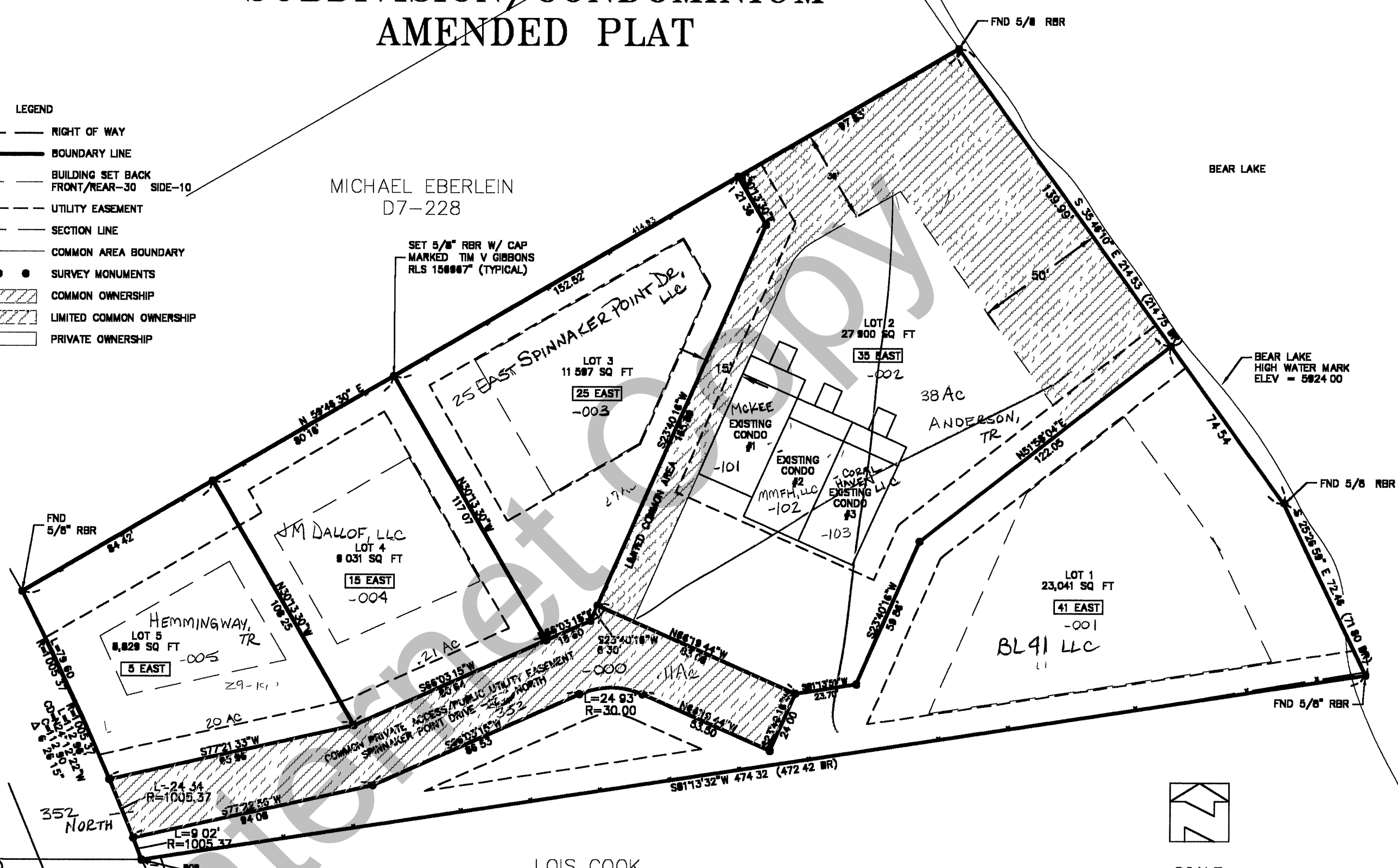
17
 16
 BENCHMARK
 (ELEV = 5942.74)
 BRASS CAP MON

2690 21'
 1713 24'
 BASIS OF BEARING
 S00 01'01"W

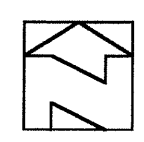
- LEGEND**
- RIGHT OF WAY
 - BOUNDARY LINE
 - BUILDING SET BACK
FRONT/REAR-30 SIDE-10
 - UTILITY EASEMENT
 - SECTION LINE
 - COMMON AREA BOUNDARY
 - SURVEY MONUMENTS
 - ▨ COMMON OWNERSHIP
 - ▨ LIMITED COMMON OWNERSHIP
 - ▨ PRIVATE OWNERSHIP

MICHAEL EBERLEIN
 D7-228

SET 5/8" RBR W/ CAP
 MARKED TIM V GIBBONS
 RLS 156667 (TYPICAL)



BEAR LAKE
 BEAR LAKE
 HIGH WATER MARK
 ELEV = 5824.00



SCALE
 1" = 40'

S89 57'18"E
 1876.96

SW CORNER SEC 16

41-16-050-001-5 LOTS
 010-0103 UNITS

			SPINNAKER POINT AMENDED PLAT	SECTION 16 T 14 N R 5 E	SCALE 1" = 40'
NO	REVISION	DATE			