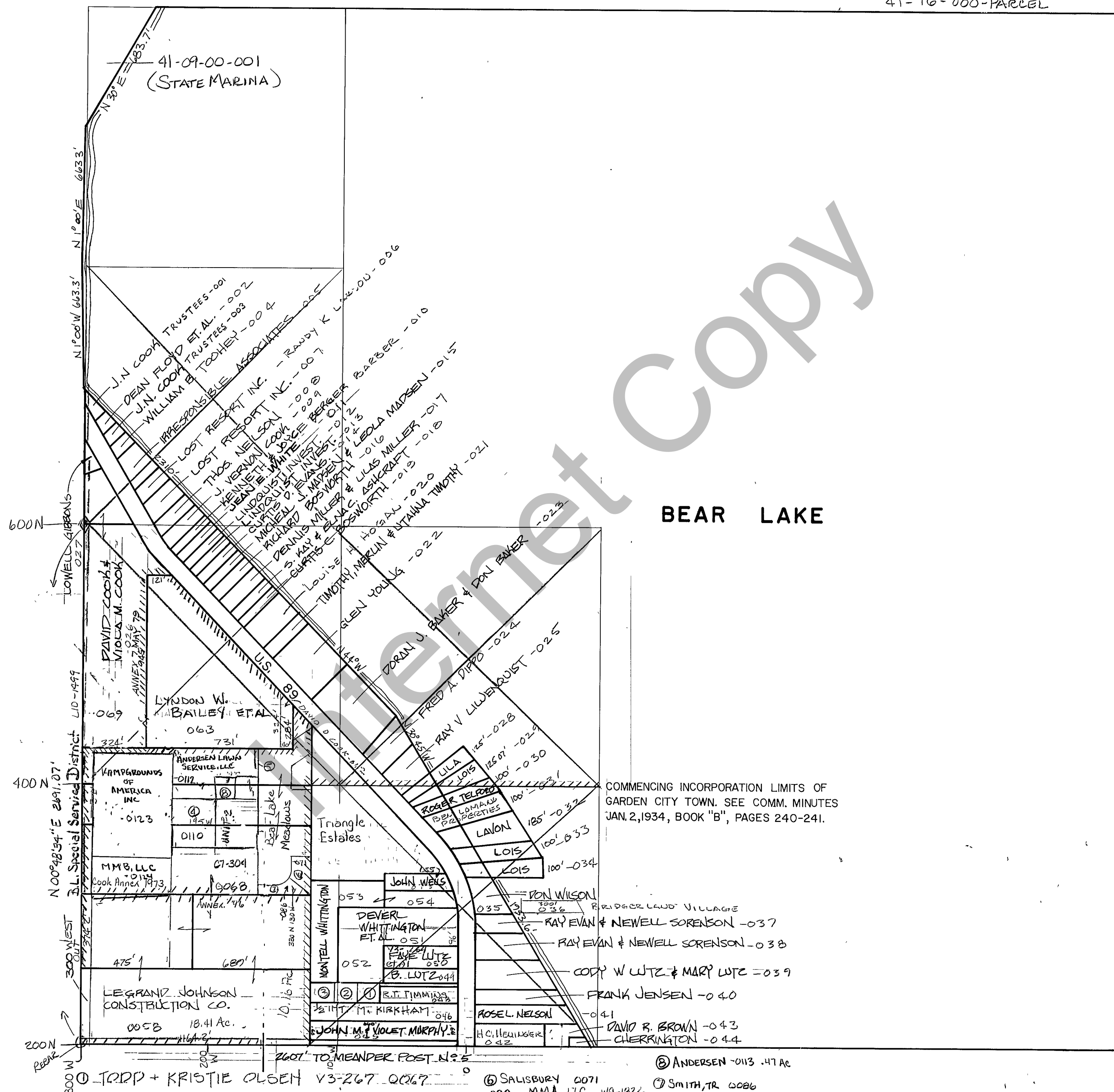


RICH COUNTY SECTION 16, T.14N., R.5E.S.L.B.&M.

41-16-000-PARCEL



BEAR LAKE

COMMENCING INCORPORATION LIMITS OF
GARDEN CITY TOWN. SEE COMM. MINUTES
JAN. 2, 1934, BOOK "B", PAGES 240-241.

- ① TRIP + KRISTIE OLSEN V3-267 0067
- ② VANOTTEN -0066
- ③ TODD & KRISTY LEE OLSEN S4-084 0047
- ④ ARGYLE -110
- ⑤ JOANN ANDERSON 0073
- ⑥ SALISBURY 0071
- ⑦ SMITH, TR 0086
- ⑧ ANDERSEN -0113 .47 Ac

REVISIONS	

THIS PLAT IS MADE SOLELY FOR THE PURPOSE OF ASSISTING IN LOCATING THE LAND, AND THE RECORDER ASSUMES NO LIABILITY FOR VARIATIONS IF ANY, WITH AN ACTUAL SURVEY.

Section 16 T.14N R.5E		book	page
drawn by GP	date OCT 1978	scale	1" = 400'