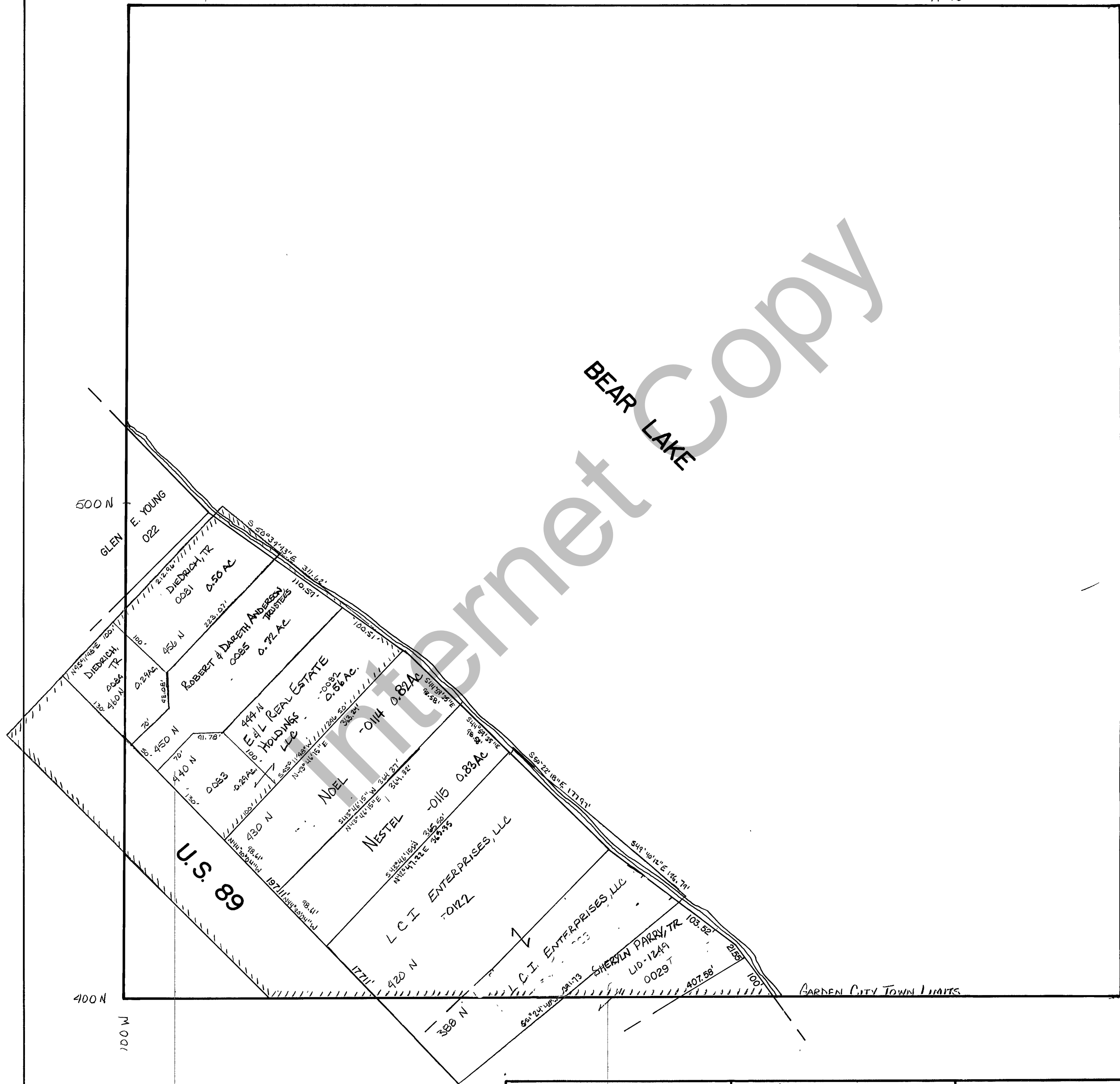


RICH COUNTY

NE 1/4 SW 1/4 SECTION 16 T. 14 N. R. 5 E., S.L.B. & M.

41-16-000-PARCEL



REVISIONS	

THIS PLAT IS MADE SOLELY FOR THE PURPOSE OF ASSISTING IN LOCATING THE LAND, AND THE RECORDER ASSUMES NO LIABILITY FOR VARIATIONS IF ANY, WITH AN ACTUAL SURVEY.

NE 1/4 SW 1/4 Section 16 T. 14 N. R. 5 E.		book	page
drawn by MVH	date 12-80'	scale 1"=100'	